



GM and the law

Geoff Ridley
New Organisms Division
Environmental Protection Authority



Regulators of GMOs

- The Hazardous Substances and New Organisms Act

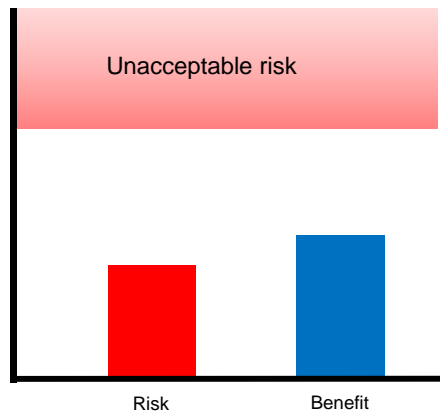
- Environmental Protection Authority
 - The Decision Making Committee (consisting of experts: scientists, social scientists, lawyers)
 - EPA staff – interact with applicants and provide advice to the decision-makers



How do we make decisions?

We weigh effects on:

- The environment
 - Human health and safety
 - Social
 - Cultural
 - Economic
- There is unacceptable level of risk defined by statute



Approved outdoor trials for:



GM potatoes



GM alliums

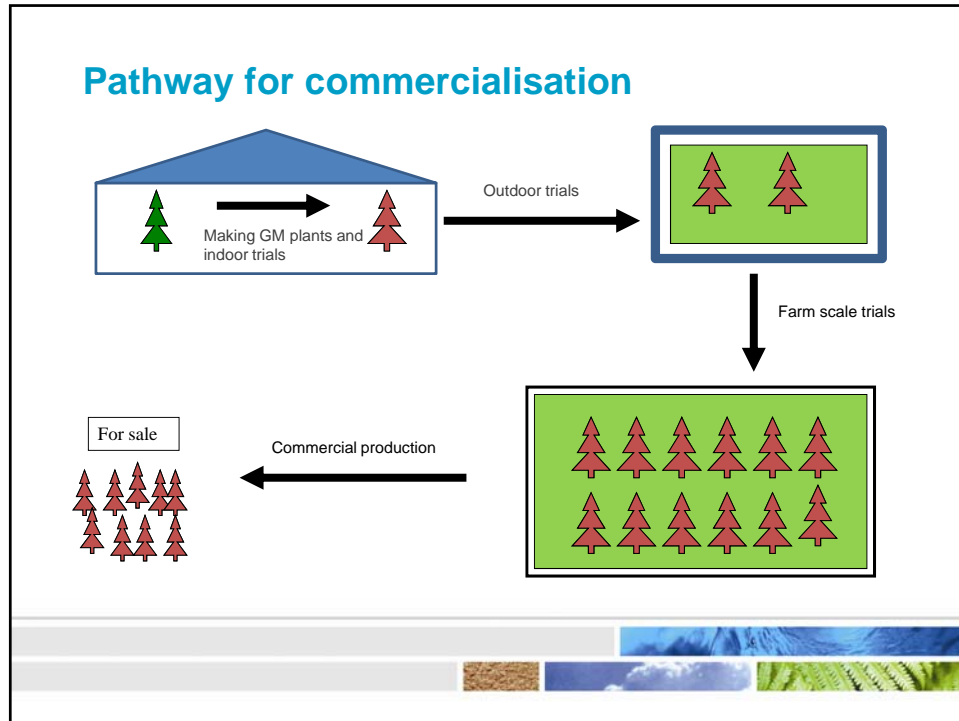
Add image
GM radiata pine – a 25 year trial approved in 2010

Approved releases for:



GM virus within a vaccine for equine influenza (ProteqFlu)

No GM plants approved to be released in New Zealand



Making GM trees

- Straightforward application process
- Total containment of GMOs (including pollen and seed) within regulated facilities
- Potential risks mitigated through controls

Outdoor trials of GM trees



- More complex application
- Applications are publicly notified
- Current GM pine trials – no reproductive structures allowed
- Pollen dispersal has not been considered yet



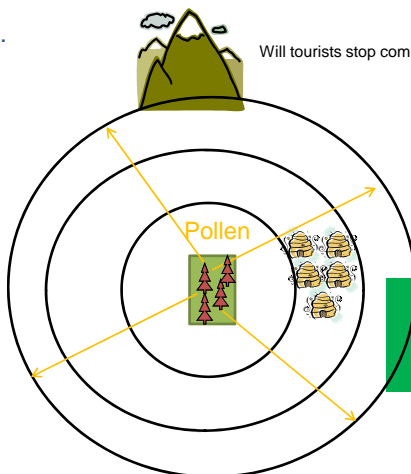
If there is flowering....

What about my honey exports?



What about my forest certification?

What coexistence practices can be used?



Will tourists stop coming?

Will I be able to let my kids play outside?

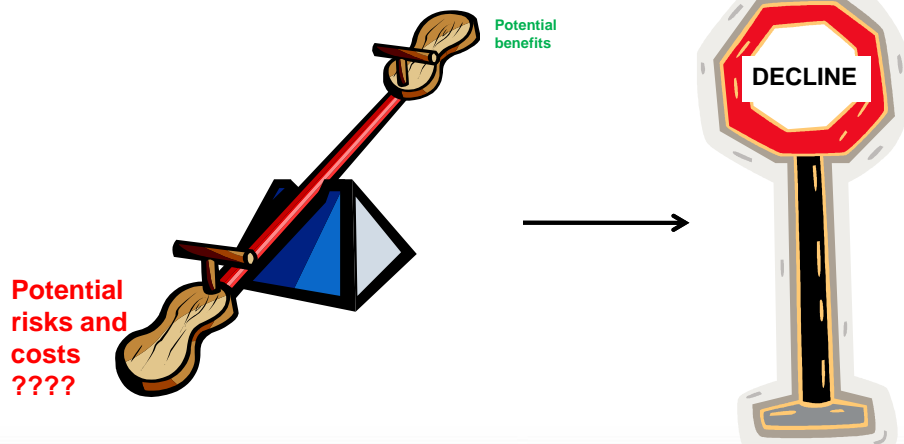


Potential benefits?

- Can only consider for the field trial activity
- Increased scientific knowledge
 - Experience gained through running the field trials
 - Information about potential beneficial or adverse effects
- Increased capacity for innovation



If.....



Release of GM trees

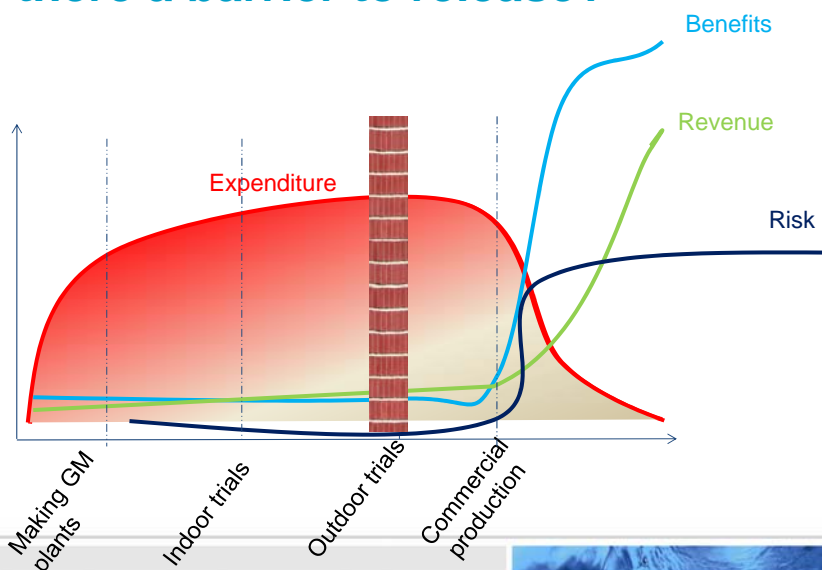


- Balance economic benefit versus the risk
- If there is a net benefit of adopting the GM trees versus not adopting (eg, a large economic or environmental benefit with a small economic risk or cost)



Approve

Is there a barrier to release?



More information?

➤ www.epa.govt.nz

