



How Ready Are We?

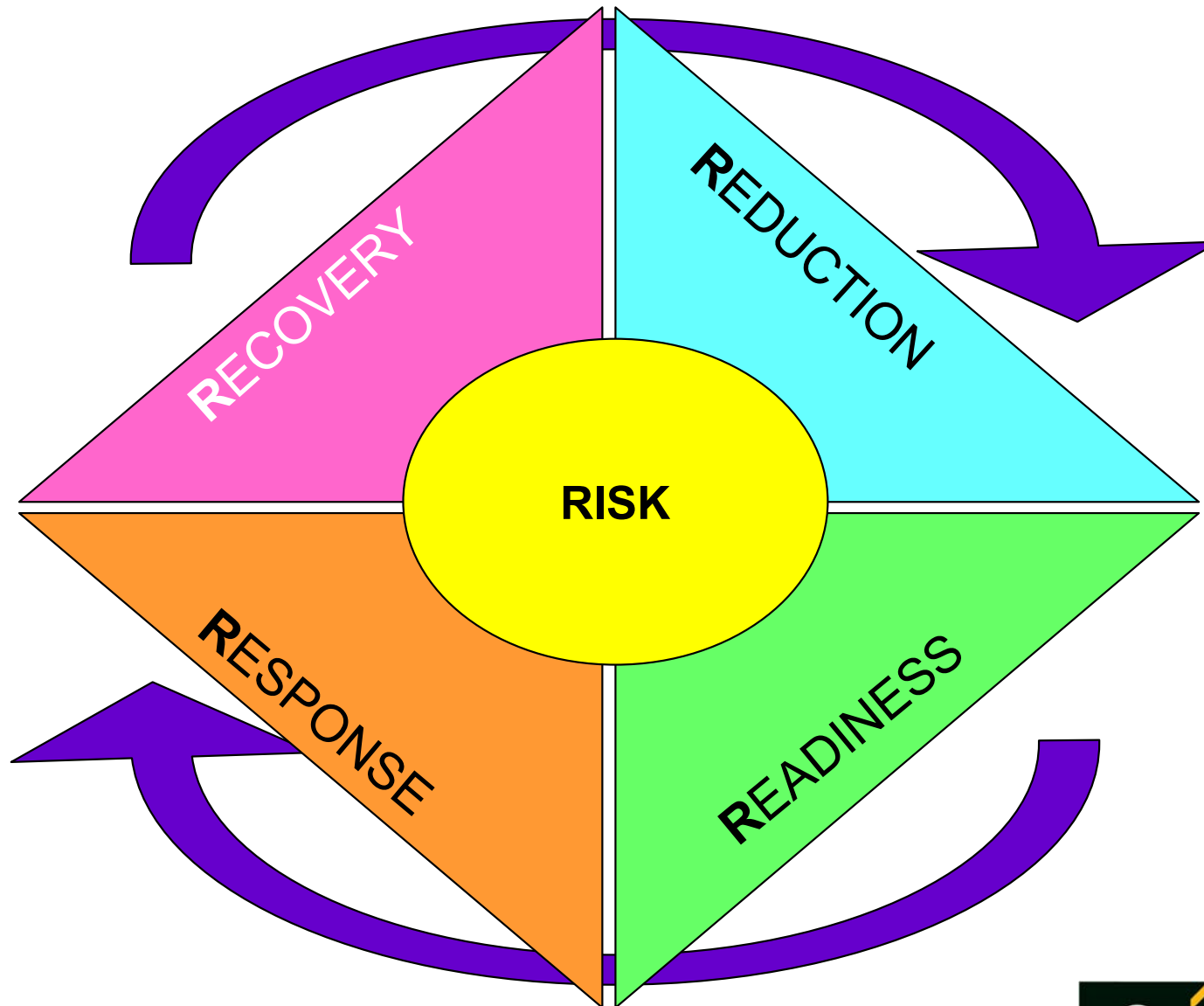
NEW ZEALAND. IT'S OUR
PLACE TO PROTECT.



How Ready Are We?

- 4 R's of Emergency Management
- Increasing Certainty of Eradication
- A Better Approach – MAF Perspective
- MAF Readiness Initiatives
- Where Re We Currently At?
- Where Do We Need To Get?

Emergency Management 4 R's



Increasing Certainty of Eradication

- Effective detection
- Robust impact assessments
- Clear response options
- Technical feasibility
- Material net benefit
- Affordable
- Public vs club benefit
- Stakeholder support/participation
- Careful selection



A Better Approach to Readiness

- **We need to address all values not just economic**
 - Cover wide spectrum of values – economic, environment, social, cultural
- **We can't predict what will come next**
 - Favour broadly applicable fundamentals over pest specific plans/tools
- **Maximise return on investment**
 - Favour broadly applicable fundamentals over pest specific plans/tools
- **Best use of public funds**
 - Apply Crown funding principles
 - Cover other values not just economic
 - Favour broadly applicable fundamentals over pest specific plans/tools
- **Ensure significant public risks are managed**
 - Participate in pest specific work when the public benefits are sufficiently high.

MAF BNZ Readiness Initiatives

Biosecurity Response Model

- Single system
- CIMS based
- Documented processes, procedures, tools
- Supported by knowledge-base
- Supported by capability development programme

Response Strategic Leadership

Provide overall strategic direction and monitor the response.

[more...](#)

Response Manager

Manage the response in accordance with the direction of Response Strategic Leadership and agreed outcomes.

[more...](#)

Communications

Ensure that the communications needs of the response are met, including provision of information to the public and managing the media.

[more...](#)

Liaison

Coordinate with stakeholders to understand their needs, share information, obtain input and manage expectations.

[more...](#)

Operations

Implement operations in the field in accordance with the Response Management Plan and the Operational Specifications.

- Surveillance
- Movement Control
- Organism Management

[more...](#)

Planning and Intelligence

Define, collect, manage, evaluate and disseminate information required to make response decisions. Develop the Operational Specifications and liaise with Operations on technical issues.

- Science and Information
- Risk Management
- Planning

[more...](#)

Logistics

Provide facilities, services and other resources to support management of the response.

[more...](#)

© Ministry of Agriculture and Forestry, 2009

Operations

[more...](#)

If required

Operations Logistics

(Coordination when there are multiple sites, especially at establishment)

[more...](#)

Contact Centre

[more...](#)

Field HQ Management

[more...](#)

Field HQ Management

[more...](#)

Surveillance

[more...](#)

Organism Management

[more...](#)

Movement Control

[more...](#)

Operations Logistics

[more...](#)

Surveillance

[more...](#)

Organism Management

[more...](#)

Movement Control

[more...](#)

Operations Logistics

[more...](#)

Biosecurity Response Knowledge Base

MAF BIOSECURITY NEW ZEALAND Biosecurity Response KNOWLEDGE BASE [VIEW OPTIONS](#) [GLOSSARY](#) [FEEDBACK](#) Search [Go](#)

[home](#) : processes and procedures

RESPONSE SYSTEM
Processes and Procedures

PROCESSES AND PROCEDURES

- ◆ Manage response
- ◆ Enable response
- ◆ Perform operations
- ◆ IRS

PEOPLE CAPABILITY

OPERATIONS RESOURCES

WHAT'S NEW?

USING THE KNOWLEDGE BASE

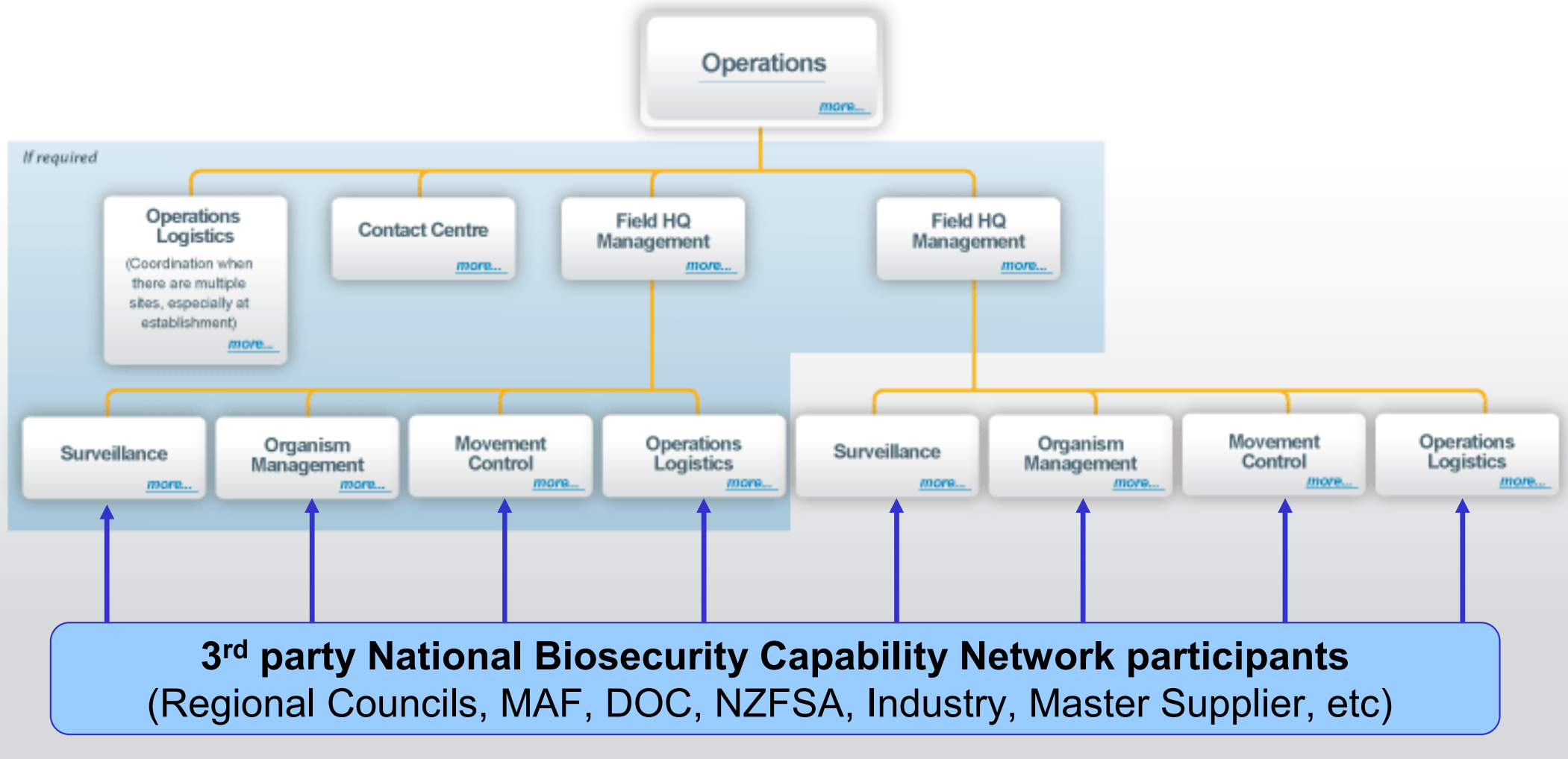
Logistics
Communications
Liaison
Correspondence
Compensation
Investigate
Initiate response
Plan and report
Response Brief
Develop business case
Plan and report
Response Management Plan
Transition from response
Learn and close
Perform operations
IRS
Advisory groups
Operational Specifications
Approvals and exemptions

National Biosecurity Capability Network

“New Zealand building one team capable of dealing with any biosecurity emergency”

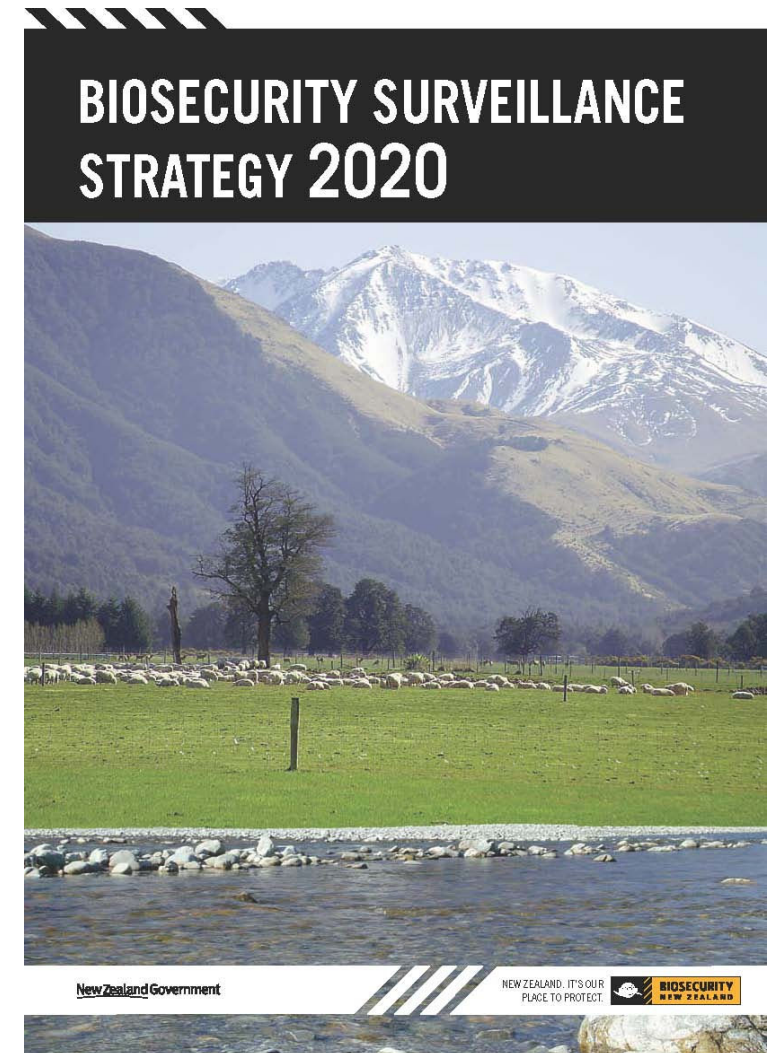
The purpose of the Capability Network is to enable delivery of the Best Capability for biosecurity operational responses

- right people with right tools in the right place at the right time
- a coalition of willing organisations wanting to participate
- harnessing all the resources available
- knowing what we have ahead of time



Biosecurity Surveillance Strategy 2020

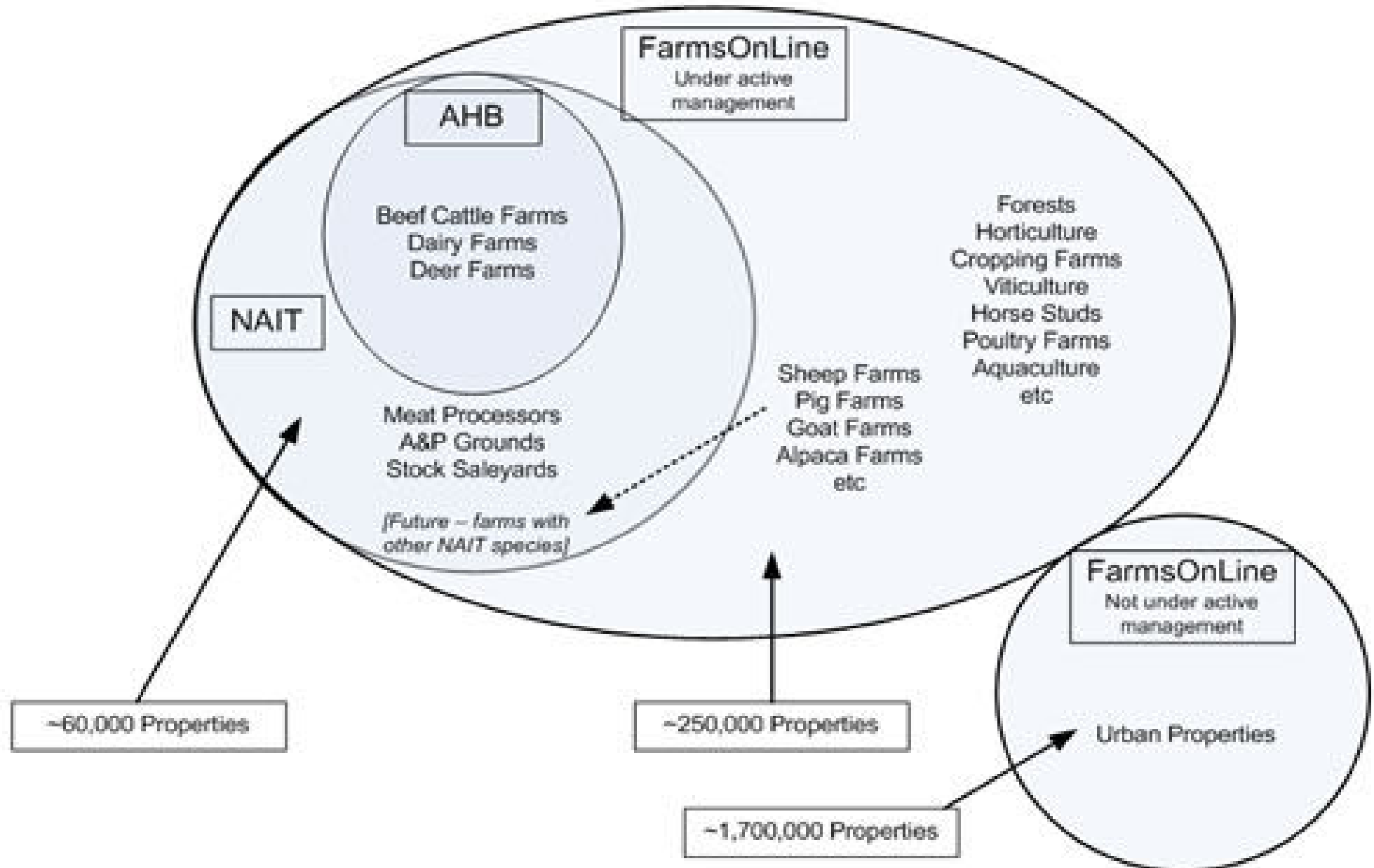
- **The following key action areas have been identified:**
 - Identifying and agreeing priorities for biosecurity surveillance.
 - Improve participation in the surveillance system – public, industry, local government.
 - Performance monitoring and reporting
 - Management of and access to surveillance information.
 - Involvement in international surveillance activity.



FarmsOnLine

- FarmsOnLine is a shared resource that will give appropriate government agencies and industry groups efficient access to up-to-date rural property information to support:
 - Biosecurity
 - National Animal Identification and Traceability
 - Supporting responses to rural adverse events
 - Effective policy development for the agricultural, food and forestry sectors

Farms Online



Where Are We Currently At?

Current State Readiness

- High Risk Site Surveillance
- Forest Health Surveillance Programme (FOA)
- Gypsy Moth Surveillance
- Industry Passive Surveillance
- Some awareness materials
- 0800 Pest Reporting Hotline
- Investigation & Diagnostic Capability
- Diagnostic Protocols
- Research Capability
- Response Capability
- Aerial Application
- Visitor Hygiene Guidelines
- NZFOA Forest Health Committee
- Pine Pitch Canker Response Plan
- Gypsy Moth Response Plan

Where Do We Need To Get?

	PRA	Surveillance Op	Awareness	Lures	Response Plan	Response CBA	Control Agents	Etc
Pitch Canker	In Place	Priority Gap	In Place	Accepted Gap	In Place	In Place	Accepted Gap	Priority Gap
Western Gall Rust	In Place	Accepted Gap	In Place	Priority Gap	Accepted Gap	Priority Gap	Accepted Gap	Accepted Gap
Gypsy moth & others	In Place	In Place	In Place	In Place	In Place	In Place	Priority Gap	Accepted Gap
Bark beetles	In Place	Accepted Gap	In Place	In Place	Accepted Gap	Accepted Gap	Accepted Gap	Priority Gap
<i>Phytophthora pinifolia</i>	Accepted Gap	Priority Gap	Accepted Gap	Accepted Gap	Priority Gap	In Place	Accepted Gap	In Place
Eucalyptus rust	In Place	Accepted Gap	Accepted Gap	Accepted Gap	In Place	Accepted Gap	Accepted Gap	Accepted Gap
Other high risk pests...	Accepted Gap	Accepted Gap	Priority Gap	Accepted Gap	Accepted Gap	Priority Gap	In Place	Priority Gap
Other med impact pests...	Priority Gap	Accepted Gap	Accepted Gap	Accepted Gap	Accepted Gap	Accepted Gap	Accepted Gap	Accepted Gap

In Place

Priority Gap

Accepted Gap

Organisms of Interest?

- Pitch Canker
- Western Gall Rust
- Gypsy moth & others
- Bark beetles and wood borers
- *Phytophthora pinifolia*
- Eucalyptus rust
- Other high risk pests...
- Other risk impact pests...

Readiness Elements?

- Pest Risk Assessment
- Surveillance Operations
- Awareness & Education
- Lures & Traps
- Diagnostic Protocols
- Diagnostic Capability
- Response Plans
- Control Agents Identified
- Control Agents Registered
- Control Agents Accessible
- Train-on-the-Day Procedures
- Trained Staff
- Movement Control Policies
- Compensation Agreements
- Pest Specific Capabilities
- In-Forest Biosecurity Protocols
- Destruction & Disposal Policies
- Etc