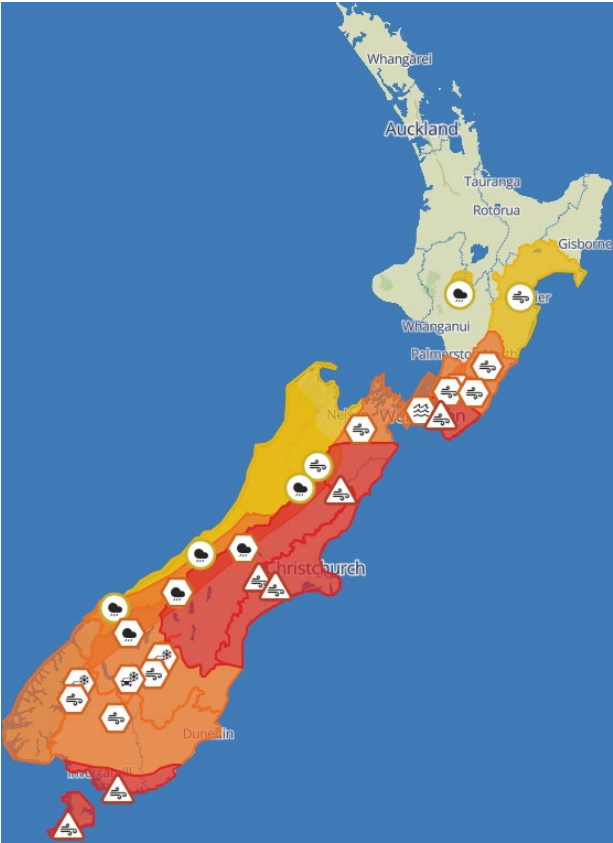


Details			
NCC location	NHQ	Date: 23/10/2025	1600
Prepared by: Name and role	Adrian Nacey NCC Intel	Issued by: Name and role	Adrian Nacey National Coordination Centre Intel

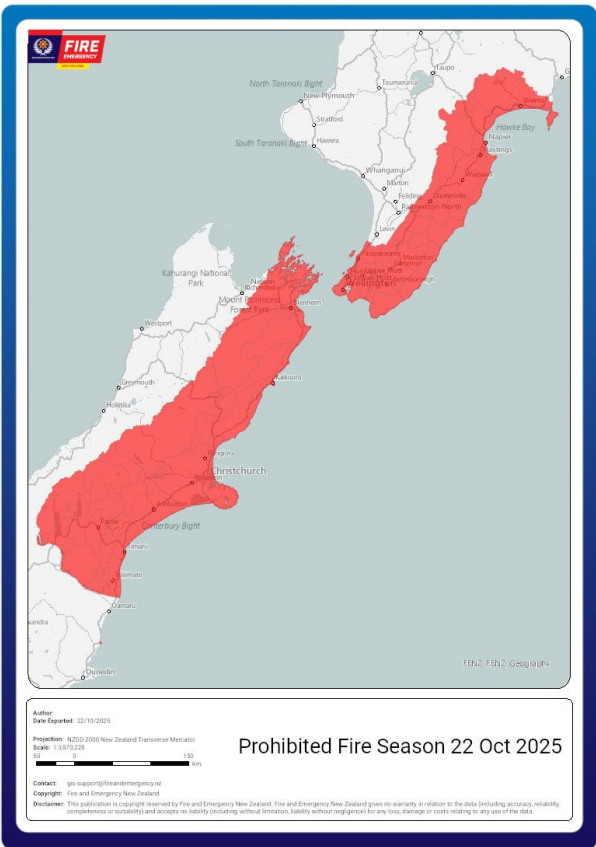
Current Situation and Key Points
<ul style="list-style-type: none"> • Fire and Emergency currently has crews tackling fires at incidents across Canterbury and Hawkes Bay that have been burning since Tuesday 21 October. These fires are now contained. • Fire and Emergency are currently in attendance at less than 10 vegetation fires that have started throughout today. None of these are beyond a 1st alarm level (Fire and Emergency’s initial response level). • Throughout the day Fire and Emergency has been responding to large numbers of non-fire weather related incidents. Southland and Dunedin have both been significantly impacted by these. • Fire and Emergency has regional coordination centres operating in Dunedin, Christchurch, Wellington and Tauranga. The Fire and Emergency National Coordination Centre in Wellington is currently operating also. • There is disruption to the roading network across the lower North Island and South Island (see below for latest update from NZTA). • Red weather warnings are in place for Canterbury (wind and rain), Southland (wind), Stewart Island (wind) and Wellington (wind). See map below for other warnings. • Fire and Emergency has issued a total fire prohibition under Section 52 of the Fire and Emergency Act prohibiting all fires in the open air for Canterbury, Wellington and up to Hawkes Bay (see map below for areas covered). • Fire and Emergency are asking every landowner, agricultural contractor, forestry manager and lifestyle block owner to help us avoid any more fires starting, and please check any old burn piles to ensure they are fully extinguished. • Parts of the South Island are currently without power. • Airports across the country are disrupted. Bluebridge have cancelled some sailings today, but Interislander are operating. • Due to current conditions aerial firefighting operations are going to be extremely limited or not possible if required. • A State of Emergency has been declared in Canterbury.

Conditions

Current Weather warnings as at 1600 23/10/2025



Current Section 52 fire prohibitions as at 1600 23 October 2025



Multiple Districts:

Current State Highway Status:

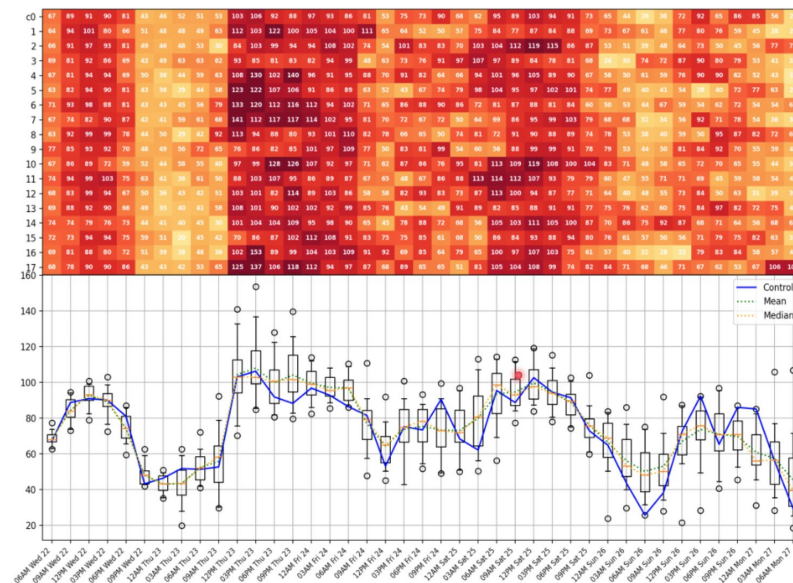
- The West Coast is currently isolated by road access.
- Hanmer Springs township has no road access.
- There is no access to the top of the South Island.
- SH 58 Whitby, between Joseph Banks Drive and Postgate Drive – CLOSED due to Flooding
- SH 2 Kaitoke to Featherston (Remutaka Hill) – CLOSED due to Wind
- SH1 Riverlands to Ward – CLOSED due to wind. Police have requested this closure due to strong winds and fire damaged debris being blown across the highway north of Kaikoura.
- SH 6 Murchison to Kawatiri - CLOSED due to washout
- SH 7 Hanmer Springs to Springs Junction (Lewis Pass) – CLOSED due to Washout
- SH 7A Hanmer Springs to Tekoa Range – CLOSED due to Fallen Trees
- SH 7 Tekoa Ranges to Waipara- CLOSED due to Fallen Trees
- SH 73 Springfield to Kumara (Arthurs Pass) – Closed due to several wind-related impacts.
- SH 80/SH8 intersection to Mt Cook – CLOSED due to flooding.
- SH 6 Haast to Makarora (Haast Pass) – CLOSED due to Slip.
- SH1 Glengarry to Ascot – CLOSED due to Fallen Trees.
- SH96 Matura– CLOSED due to power lines down.
- SH 94 East Gate (Hollyford) to Donne River (Westgate) – CLOSED due to Avalanche Hazard
- Traffic Signals, CCTV and VMS in Tasman, Nelson, & Marlborough are back online.
- SH7 Lewis Pass Variable Message Boards (VMS) Waipara, Springs Junction, and Reefton have had power restored, but is intermittent.

Appendix 1 – location weather information (south to North)

INVERCARGILL

Forecast Wind Gust

NZENS | Init: 15 UTC 21/10/25 | 3H max wind speed of gust (km/h) | Location: Invercargill (-46.4, 168.4)

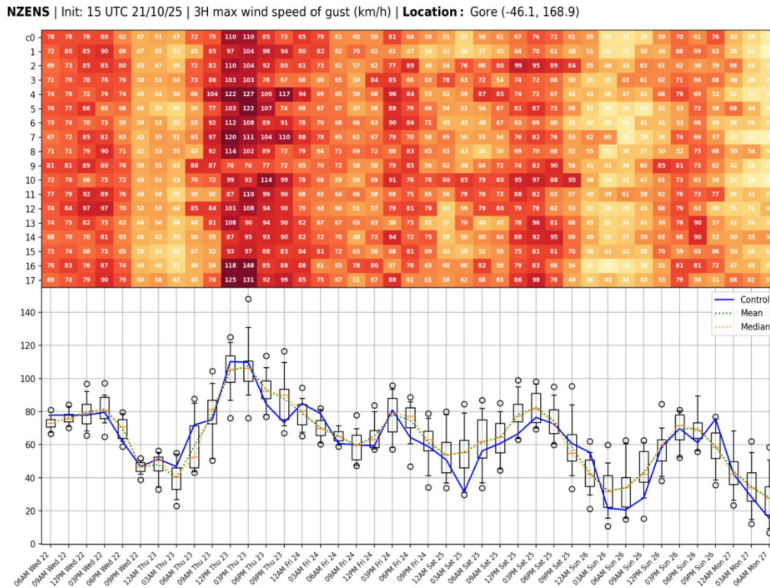


Chris Brandolino

Invercargill could see high wind gusts over 100 km/h for a prolonged period from noon Thursday to Midnight Friday, or even to 0600 Friday.

GORE

Forecast Wind Gust

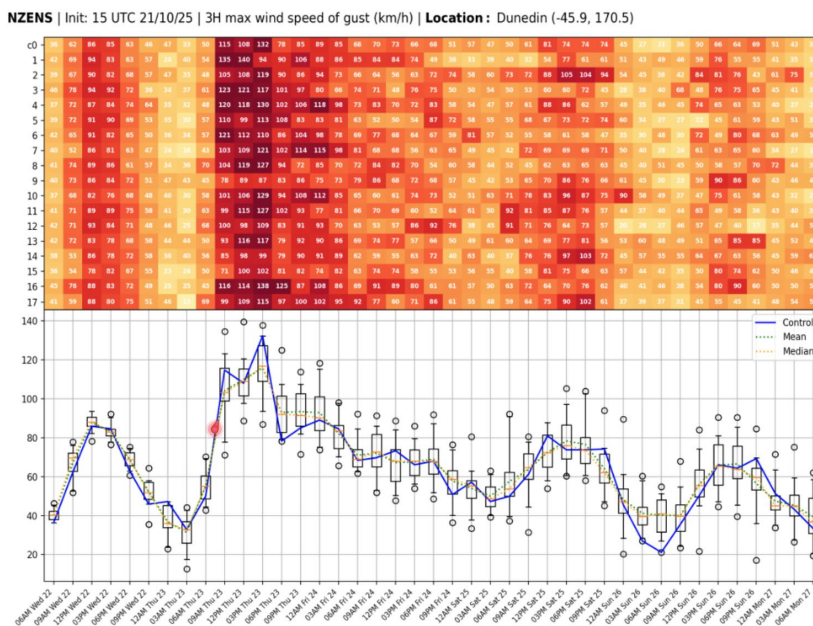


Chris Brandolino

Gore may see wind gusts over 100-120 km/h for about a 6 hours between noon and 1800, with winds easy but still blustery

DUNEDIN

Forecast Wind Gust

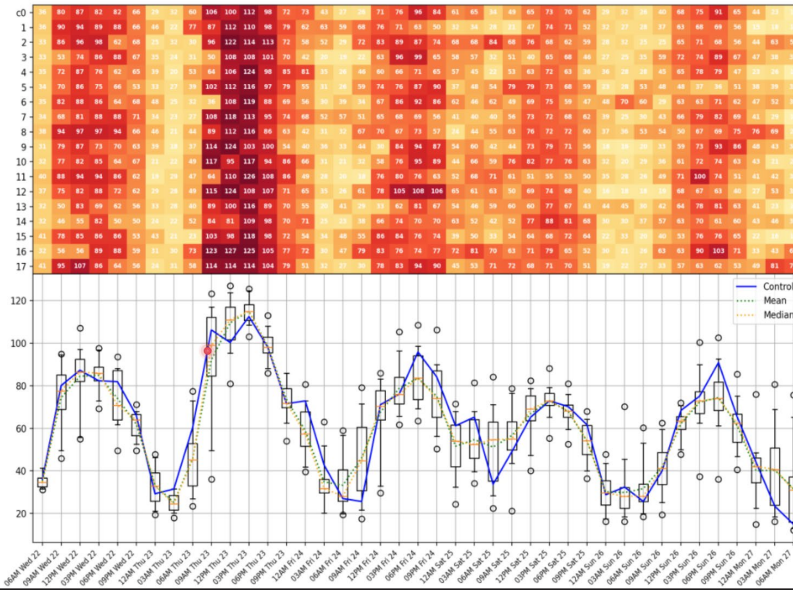


Dunedin could see wind gusts 100-130 km/h with the worst expected from about 0900 to 1500

TIMARU

Forecast Wind Gust

NZENS | Init: 15 UTC 21/10/25 | 3H max wind speed of gust (km/h) | Location: Timaru (-44.4, 171.2)

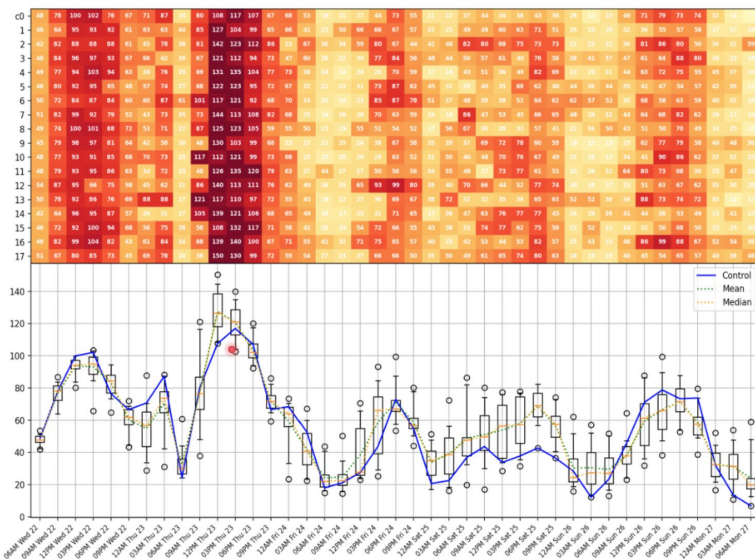


Timaru can expect maximum wind gusts of 100 – 120 km/h with the worst expected 0900 to 1500hrs

ASHBURTON

Forecast Wind Gust

NZENS | Init: 15 UTC 21/10/25 | 3H max wind speed of gust (km/h) | Location: Ashburton (-43.9, 171.8)



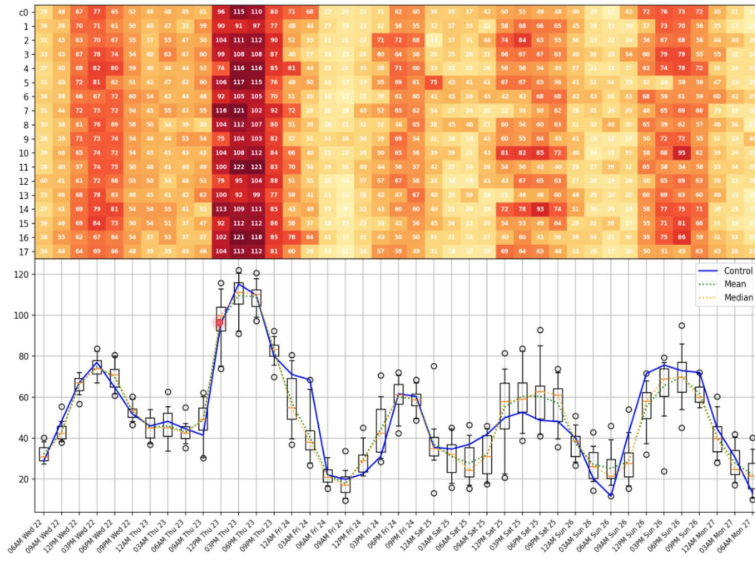
Chris Brandolino

Ashburton could see maximum wind gusts of 110-140 km/h with the worst period 1200 – 1800 hrs

CHRISTCHURCH

Forecast Wind Gust

NZENS | Init: 15 UTC 21/10/25 | 3H max wind speed of gust (km/h) | Location: Christchurch (-43.5, 172.6)

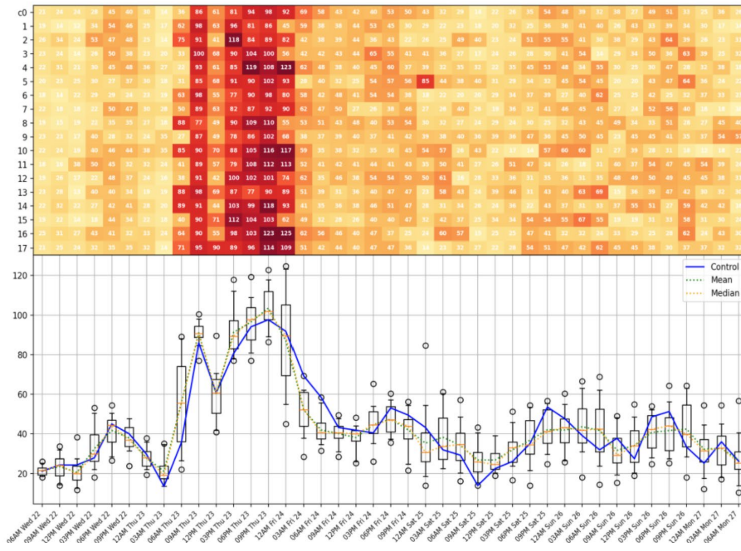


Christchurch could see maximum gusts of 100-120 km/h with the worst of it between 1200 and 1800hrs

KAIKOURA

Forecast Wind Gust

NZENS | Init: 15 UTC 21/10/25 | 3H max wind speed of gust (km/h) | Location: Kaikoura (-42.4, 173.7)

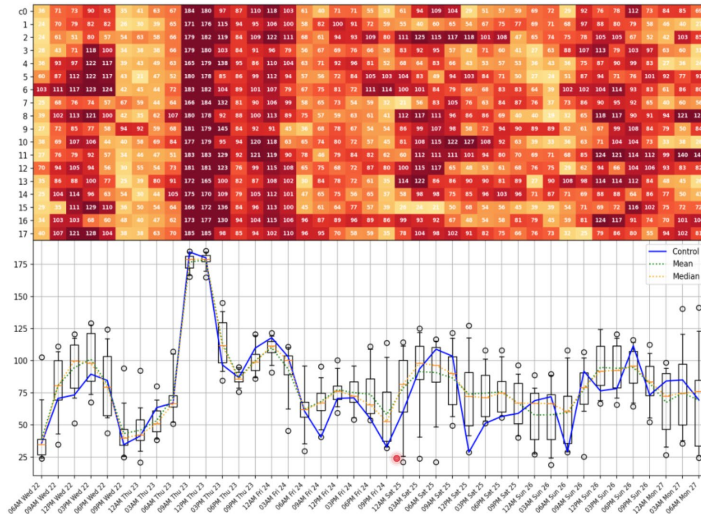


Kaikoura has much more variation of the maximum gust speeds, but the maximum likely to be 100-120 km/h somewhere 0900 to 0000 Friday, with more potential than other places to have their worst patch in the evening (1800 to 0000)

HANMER SPRINGS

Forecast Wind Gust

NZENS | Init: 15 UTC 21/10/25 | 3H max wind speed of gust (km/h) | Location: Hanmer Springs (-42.5, 172.8)



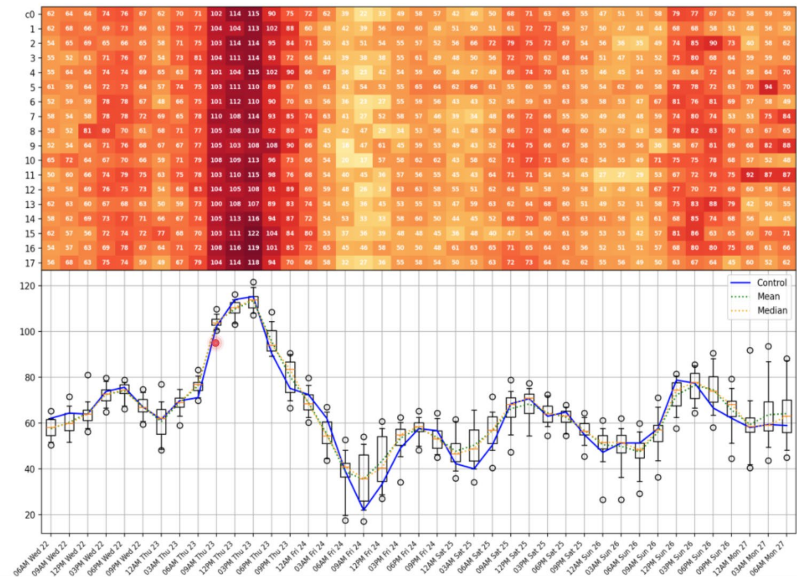
Chris Brandolino

Hanmer Springs have one of the most concerning predictions, with maximum wind gusts quickly escalating to 130 – 180 Km/h in the period of 0900 to 1500, with a possible second wave 2100 into Friday 0300. It must be noted that the forecast point is 200m above Hanmer Springs. While seemingly unthinkable, there is potential for wind gusts over 160 km/h to occur.

WELLINGTON

Forecast Wind Gust

NZENS | Init: 15 UTC 21/10/25 | 3H max wind speed of gust (km/h) | Location: Wellington (-41.3, 174.8)

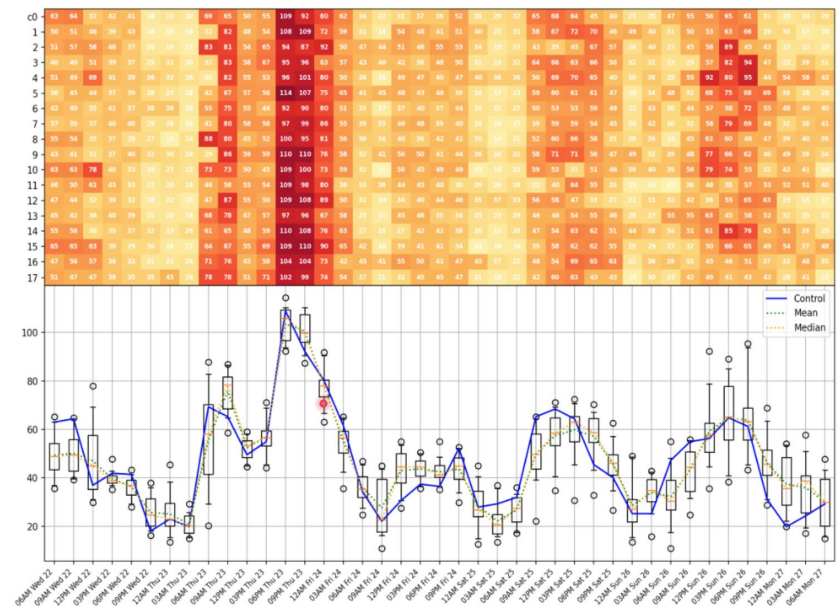


Wellington looks to have a fairly consistent prediction of 100- 120 km/h maximum gusts between 0900 and 1800, tapering off in the later evening

MASTERTON

Forecast Wind Gust

NZENS | Init: 15 UTC 21/10/25 | 3H max wind speed of gust (km/h) | Location: Masterton (-40.9, 175.7)



Masterton is likely to have maximum wind gusts of 100-110 km/h in the window of 1800 to 2100 hours